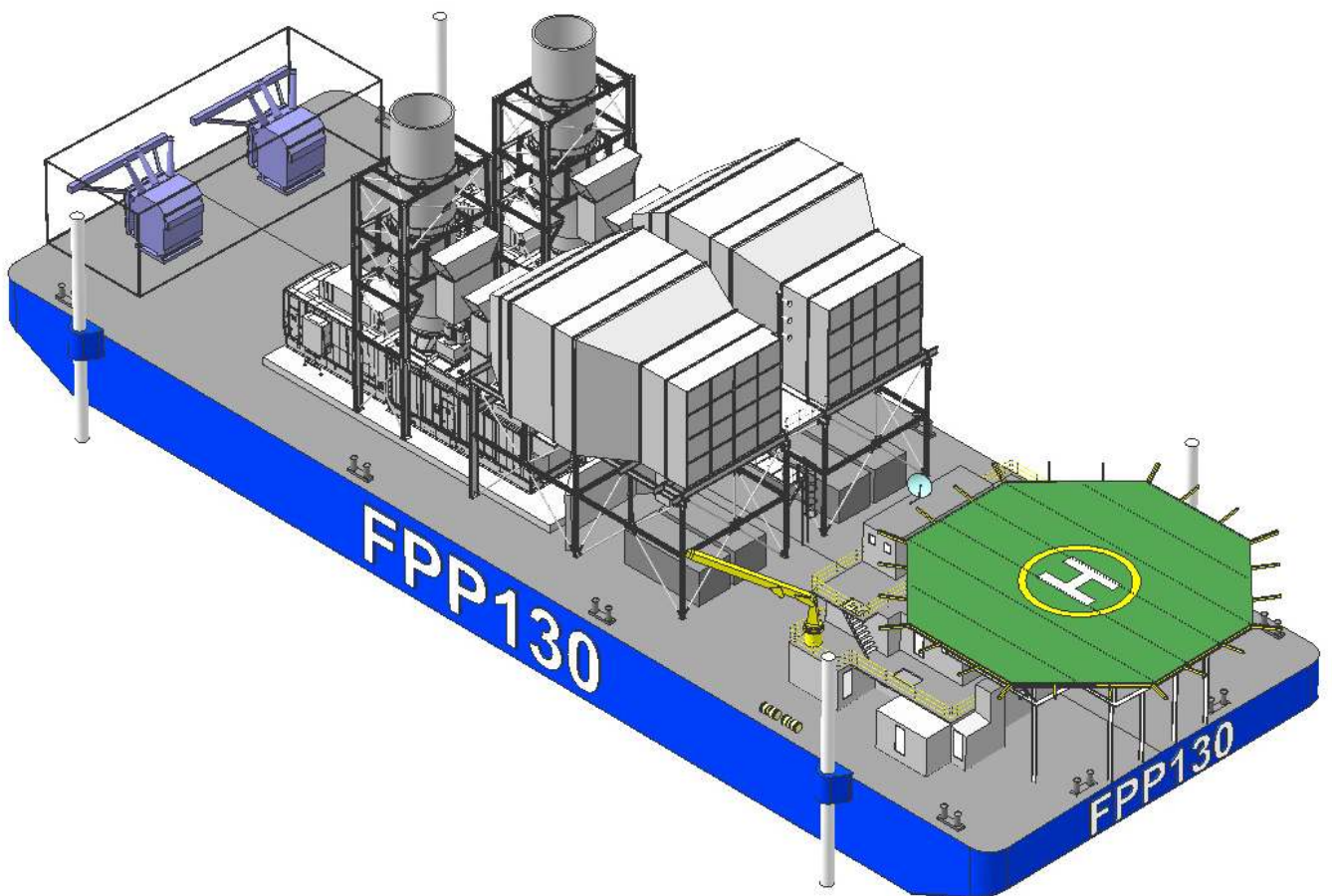


# ASRY - CENTRAX

ASRY-CENTRAX BAHRAIN WLL

## FPP130 Power Plant



## ASRY - CENTRAX

By utilising the respective strengths of these two companies, we are able to offer a uniquely accomplished power-plant solution, not only in the quality of the engineering but also, most importantly, from an operational perspective.

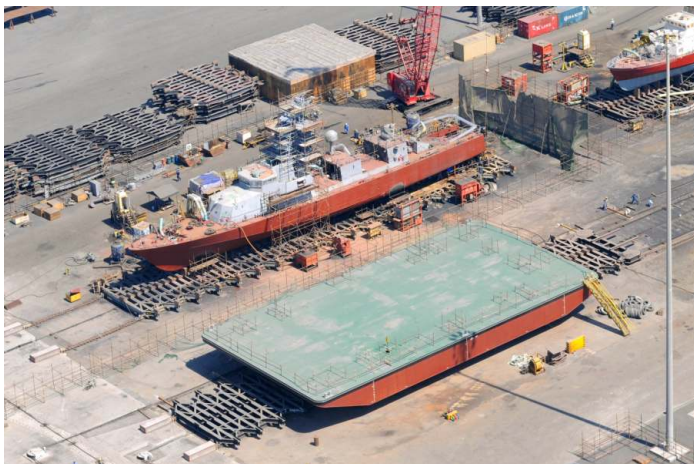
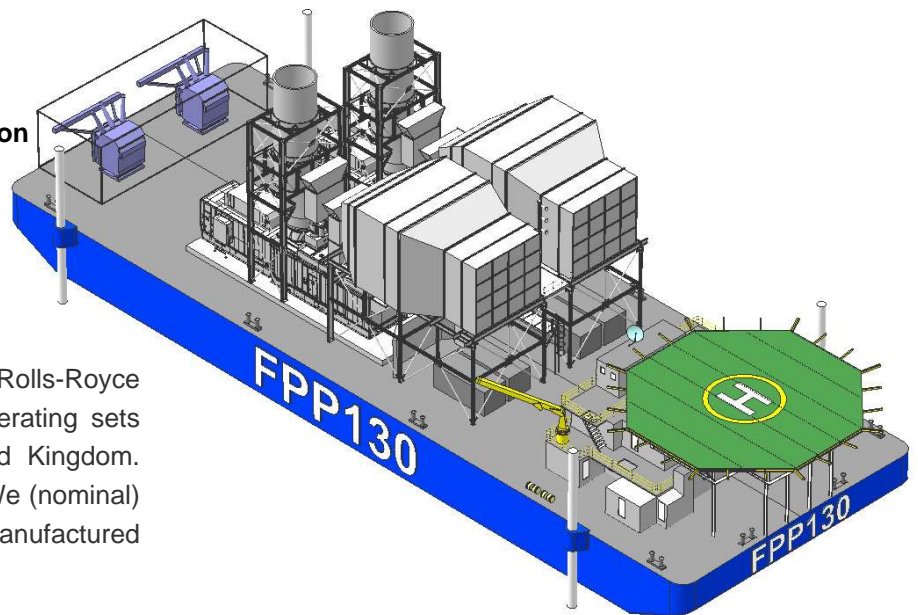
The FPP 130 Power Plant is a self-contained, modular electricity generating system designed to be situated within port, river or sheltered coastal locations.

### Environmental Features

- Double-skin fuel and oil tanks
- 80 dBA at 1 metre sound attenuation

The basic module comprises two Rolls-Royce Trent 60 gas turbine powered generating sets manufactured by Centrax in the United Kingdom. Together these produce a total of 132MWe (nominal) and are located on a hull designed and manufactured by ASRY in Bahrain.

The individual power plants can be linked together in multiples and supplied with a tanker barge or barges configured for the storage of liquid or LNG fuels. The units can be connected to the local electrical grid or operated as stand-alone, island plant.



ASRY slipway, Bahrain - floating plant under construction

### Advantages of the FPP Power Plant

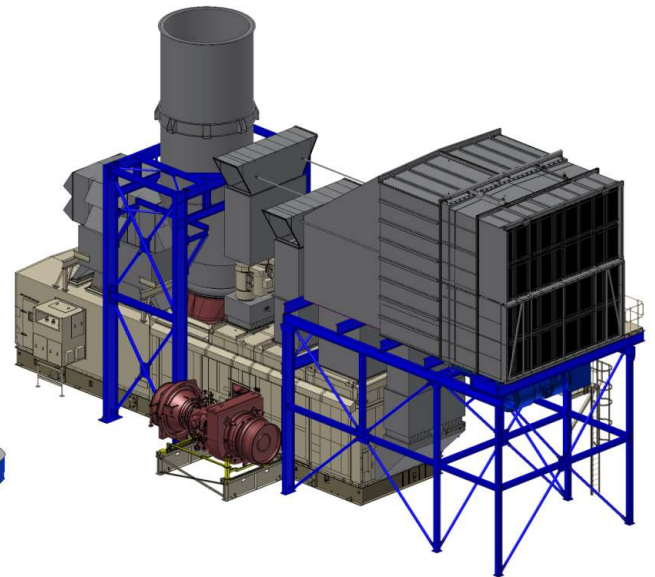
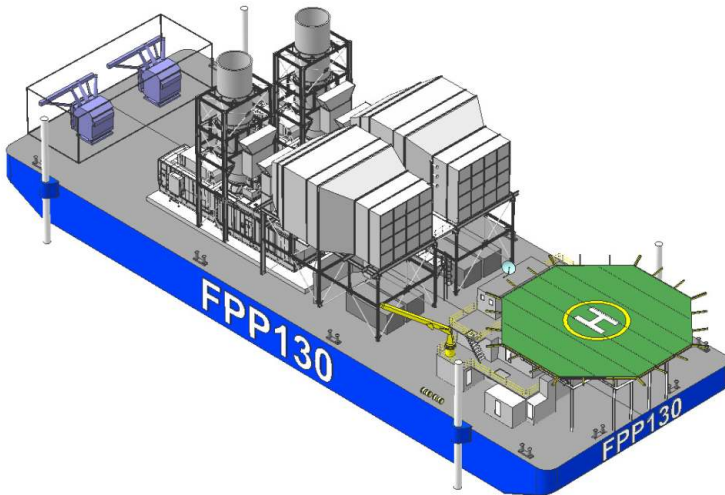
- High efficiency **Rolls-Royce** turbines
- Constructed in the ASRY shipyard under controlled conditions
- Transportable power, large capacity can be moved to areas of need quickly
- Fuels can be supplied by ocean transport and stored in adjacent floating containers
- Financially viable asset for installation in developing countries

**A**SRY has been established in Bahrain since 1977 and was among the first shipyards in the world to receive ISO certifications for Quality Management, Environmental and Health & Safety Systems, as well as the Code for Port Security.

The FPP130 hulls are fabricated utilising dedicated slipways and the generating equipment is installed and tested prior to the complete barge being moved to its destination and commissioned.



**Rolls-Royce Trent 60 Engine**



**Trent 60 Generator set**

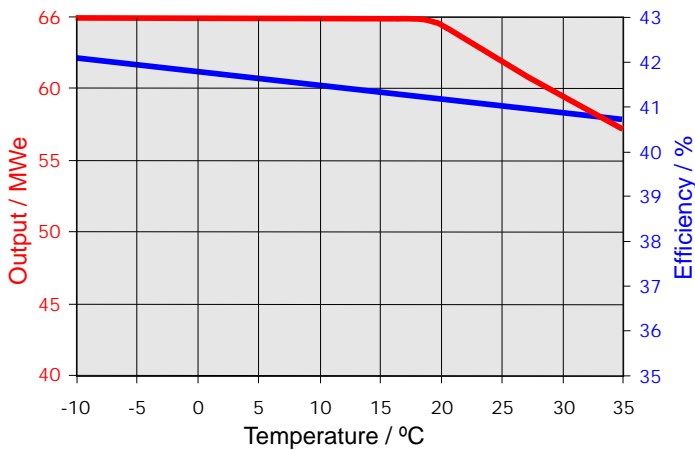


**Centrax Trent 60 Generator package**

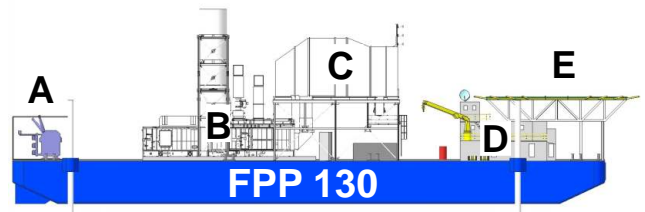
### Features of the Floating Power Plant

- **0 to 100% load in less than 15 minutes**
- **Island and parallel operations**
- **50 and 60 Hz compatible**
- **Multi-Fuel**
- **Two unit flexibility**
- **ABS classification**
- **CE and PED certified**

**Trent 60 WLE 66 MW + ISI**



**Aerial view of ASRY Shipyard, Bahrain**



- A Main Transformers
- B Generator Module
- C Air Intakes
- D Control & Accommodation Block
- E Helideck

**Power Plant 130 - Dimensions**

Length Overall	82 Metres
Width	28 Metres
Depth	6 Metres
Draft	4.5 Metres

For further information please contact:



**ASRY-CENTRAX BAHRAIN WLL**  
 Office no. 5 & no. 6, Building 826, Road 102  
 Block 128, Drydock Highway  
 Hidd, Kingdom of Bahrain  
 E-mail: peter.ward@centraxgt.com  
 www.asrycentrax.com

The information contained in this brochure is subject to alteration without notice  
 ASRY-CENTRAX BAHRAIN WLL will be pleased to discuss technical and commercial details on an individual basis